



Executive Director Report

Annual General Meeting

September 1, 2024 to August 30, 2025

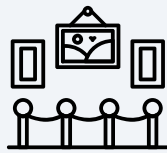


elora
CENTRE FOR THE
arts

Exhibitions & Artist Engagement



Our **Gallery** offers a variety of artist exhibitions year-round, along with a range of community gatherings and events.



Exhibitions in the Gallery

6

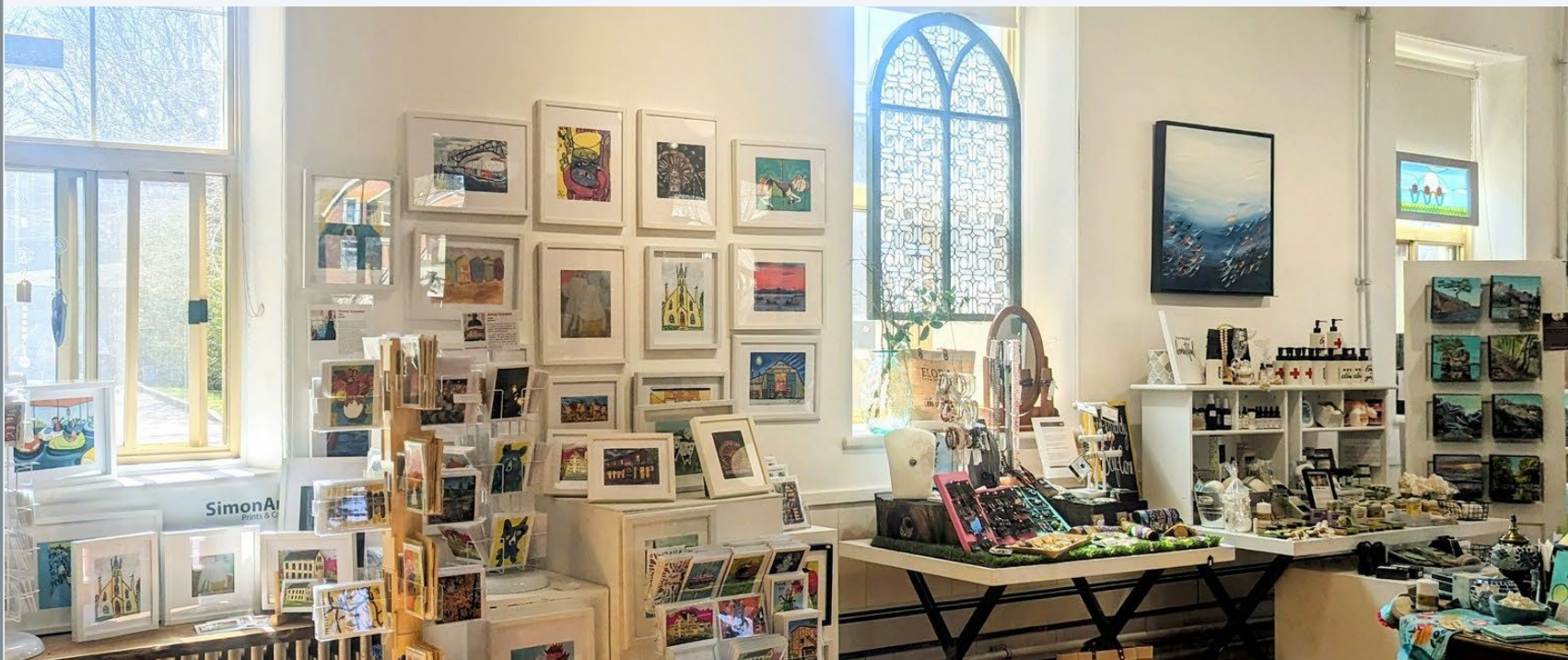


Artists featured in the Gallery

12



Exhibitions & Artist Engagement



The Artisan Shop allows us to showcase the work of over 45 artists, artisans and makers throughout the year. The shop is open 5 days a week (7 days a week in the summer).

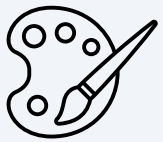
 Artists & makers featured in the Artisan Shop

45



Programming & Outreach

We offer arts programs , classes, camps and workshops for **all ages**, along with **arts-based outreach programs** designed to meet specific needs in our community, that **engage thousands of people** every year.



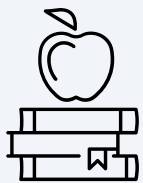
Programs and
classes offered

277



Participants,
artists, facilitators &
volunteers

6,897



Number of free or
highly subsidized spots

2,050

Programming & Outreach



Supportive Arts for Adults with (Dis)Abilities

A unique program offering twice -weekly inclusive art & mindfulness classes for adults with varying abilities; welcomes participants and caregivers from Wellington County & beyond; **1,142 participants.**



Artful Ageing

ARTFUL AGEING is part of our expanding Outreach program, offering monthly guided art classes, designed especially for long-term care and retirement living residents; **152 participants.**



Summer Camps, March Break & PA Days

Curated camps for kids ages 4-12 that offer creative projects, art fundamentals, free-flow makerspace play and outdoor fun with **1,774 participants** in 2024-2025

Programming & Outreach



Community Connections Through Art

This in-school program connects elementary and high school students with (dis)abilities to important issues in their community through the arts; **540 participant spots** last year.



Adult Art Classes & Workshops

Held **40 days of adult workshops** that attracted **427 participants** covering a range of artistic and creative modalities, including still life, acrylic and oil painting, weaving and more.



Art Classes & Workshops for Kids

Held **15 art classes and workshops** for **175 kids and teens**, ranging from drawing and printmaking to holiday crafts, mixed media collage and more.

Community & Partner Engagement



ECFTA Creative Roots Artist of the Year

Tom Wilson received this award at the 15th Riverfest Elora for their support of the arts in their communities and for blazing a trail for other artists to follow.



Partner Collaboration - COC

We partnered with the Canadian Opera Company for a transformative workshop series designed to fuel artistic spirit and push participants beyond their artistic boundaries.



Partner Collaboration - Hospice

This series, presented collaboratively by Aboyne Rural Hospice and ECFTA, highlighted the transformative role of community -based and arts-driven approaches to health and wellness.

Community Engagement



Open Sky Live – Free Summer Concerts

Our second summer concert series was a huge success, attracting **more than 2,000 people** to the Arts Centre yard to enjoy some great live music and a wonderful community atmosphere.



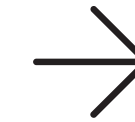
Picnic at the Pavilion

We held our two Picnics at the Pavilion in Summer 2025, where hundreds of community members joined us for a BBQ dinner in tandem with two events in our summer concert series.



Volunteer Engagement

Over the 2024-25 fiscal year, we engaged volunteers **1,745 times** through our programs, operations and events — an increase of nearly **30%**.



Satellite Art Exhibition at the Elora Mill

25 pieces of original art curated by the ECFTA were displayed on the walls of the Elora Mill Hotel & Spa, providing an outstanding showcase for local artists.



Supporting our Arts -Based Tenants

Each year, we organize a Holiday Open House / Artisan Market to promote the wares of our resident artists to holiday shoppers. This event featured 35 artists from 5 of our tenant studios.



Moonlight at the Mill Gala

Hosted at the Elora Mill, this record -setting night raised \$120,000 for ECFTA's capital expansion and accessibility project.

Expansion and Accessibility Project



We broke ground on our expansion in October 2024, marking the beginning of remarkable changes to our building. By the end of August 2025, we were nearly ready to welcome everyone into our expanded and fully accessible spaces.



Fundraising

By the end of August 2025, we had raised 97% of our fundraising goal.

